

FIGURE 6 FRONT VIEW OF AQUA FOUNTAIN ASSEMBLED



Figure 6

<u>Key No.</u>	<u>Part Name</u>
2	Dispenser switch
3	Drinking water dispenser
4	Reset
13	Boiling tank drain extension tube
18	Boiling tank lid
19	Water catcher
21	Water catcher screen
22	Boiling tank drain valve
25	Distilled water drain valve

FIGURE 7 REAR VIEW OF AQUA FOUNTAIN ASSEMBLED

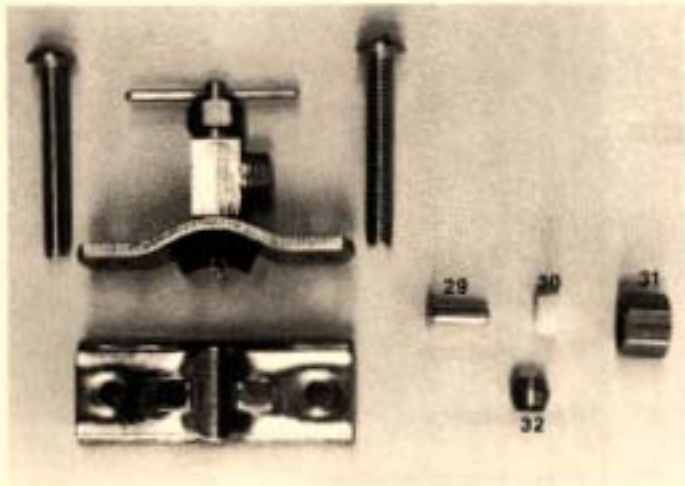


Figure 7

<u>Key No.</u>	<u>Part Name</u>
10	Pump switch
11	Fan switch
12	Main circuit breaker
14	Inline filter
15	Auxiliary water outlet
16	Temperature control knob
26	1/4" EVA water line tubing



Figure 8



23
/

FIGURE 8 SADDLE TAPPING VALVE ASSEMBLY

Key

No. Part Name

- 23 Saddle tapping valve kit
- 29 Brass insert
- 30 Delrin sleeve
- 31 Compression nut
- 32 Brass sleeve (for use on copper line)

FIGURE 9 INSTALLATION OF TUBING TO INLINE WATER STRAINER

NOTE: We have deleted the inline filter (Key No. 14) and replaced it with an inline strainer.

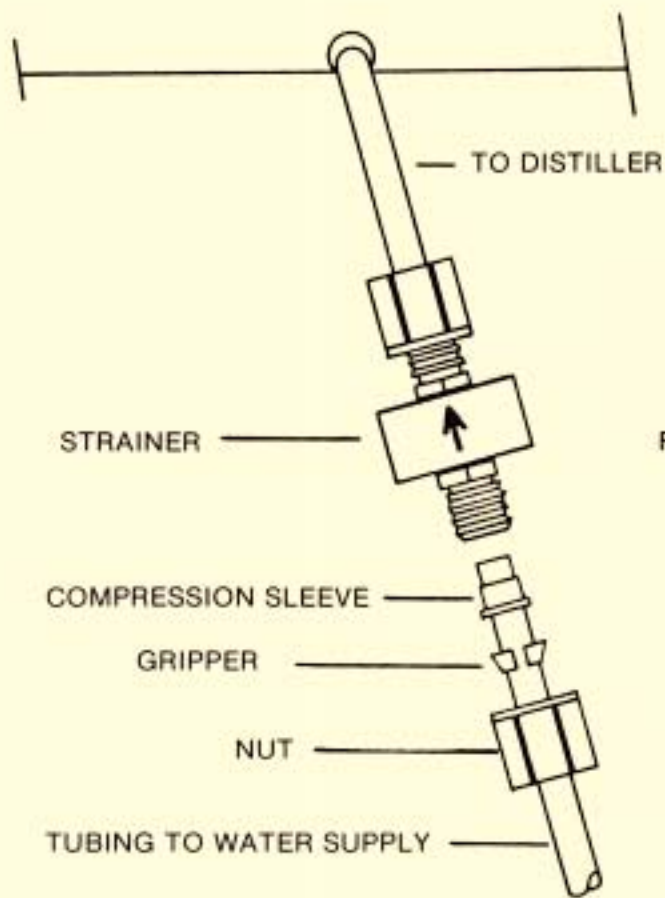


Figure 9

1. Remove plastic nut from strainer.
2. Insert the tubing through the small end of plastic nut and let it protrude about 1/4". The gripper and compression sleeve may come out of the nut while inserting the tubing. Install them back onto the tubing as per drawing.
3. Thread plastic nut with tubing on fitting of strainer about 1/4 turn, push the tubing up into the fitting and then tighten nut.
4. When it is necessary to remove the strainer from unit, be sure to replace it in the right direction for water flow. Check arrow on strainer.

FIGURE 10 FRONT VIEW WITH COVERS REMOVED

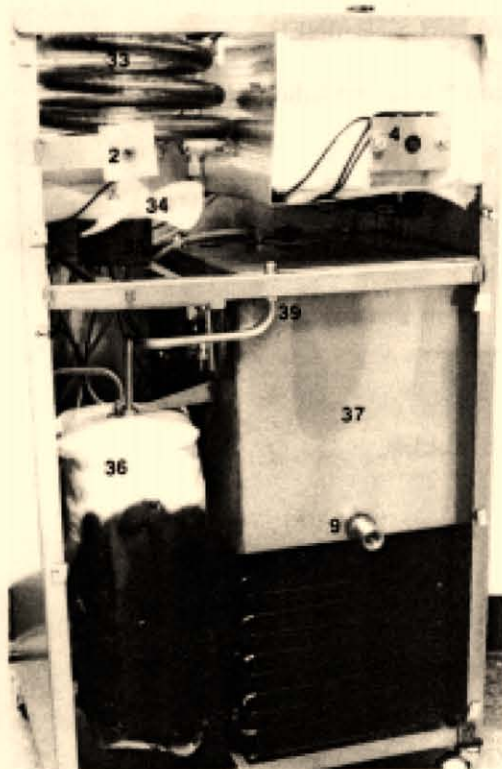


Figure 10

<u>Key No.</u>	<u>Part Name</u>
2	Dispenser switch
4	Reset
9	Valve coupling for storage tank
33	Aqua condensing coil
34	Fan blade
35	Motor assembly
36	Cooling tank
37	Storage tank
38	Micro switch
39	Cooling tank top tube

FIGURE 11 BACK VIEW WITH COVERS REMOVED

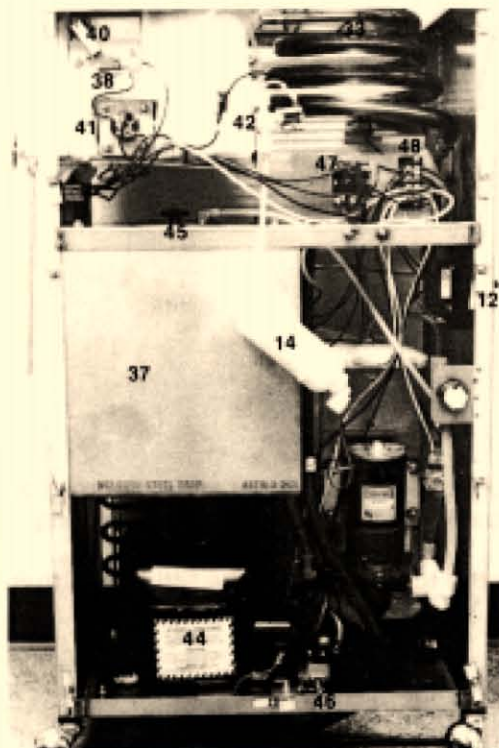


Figure 11

<u>Key No.</u>	<u>Part Name</u>
12	Main circuit breaker
14	Inline filter
33	Aqua condensing coil
37	Storage tank
38	Micro switch
40	Actuating arm
41	Heating element—1500 watts
42	Water solenoid
43	Demand pump
44	Compressor
45	Storage tank lid
46	Temperature control
47	Relay
48	Terminal block

The instructions given below and on the following pages should be followed closely in assembling and preparing your Aqua Fountain for Operation.

ASSEMBLY

The design of this machine makes it unnecessary to remove either the front or back covers to put the machine into operation.

CAUTION: During assembly do not lay the machine on its side or back. This may damage the compressor.

1. Place the machine near an existing water line and a 20 amp, 120 volt electrical wall outlet. **DO NOT PLUG MACHINE INTO ELECTRICAL OUTLET UNTIL INSTRUCTED TO DO SO LATER IN DIRECTIONS.**
2. Remove contents of the waste water catcher (Figure 3-19). Attach waste water catcher to unit with the two clips located on the back side (Figure 3-20). Insert the waste water catcher screen (Figure 3-21) into waste water catcher.
3. Install distilled water drain valve (Figure 3-25). **DO NOT REMOVE THE WHITE TEFLON THREAD TAPE AROUND THE VALVE THREADS.** Insert the wood dowel (Figure 3-24) into valve outlet and screw the valve clockwise into the drain coupling (Figure 1-9) until tight.
4. Install the boiling tank drain valve (Figure 3-22). **DO NOT REMOVE THE WHITE TEFLON THREAD TAPE.** Turn valve on to boiling tank drain nipple on side of machine (Figure 1-5). Tighten valve with wrench.
5. Install boiling tank drain extension tube (Figure 2-13). Remove the compression nut and brass sleeve from the boiling tank drain valve outlet (Figure 4). Hold one end of the tube; slip the compression nut over the tube, small opening first, then slip on the brass sleeve. Push the tube firmly into the drain valve outlet and tighten the compression nut with a wrench (Figure 6-13).
6. Position the drinking water dispenser tube (Figure 1-3) by removing the tape and rotating the tube to a straight forward position. Tighten the compression nut with a wrench. See complete assembly (Figure 6-3).
7. Install the 1/4" EVA tubing to in-line water filter (Figure 9).
8. Connect saddle tapping valve to home cold water supply. **DO NOT USE THE HOT WATER LINE.** See instructions on saddle tapping valve kit (Figure 8) for assembly. **NOTE:** If you have a soft water unit in your home, you can use the cold water line from the water softening unit.
9. Connect EVA tubing water line to the saddle tapping valve (Figure 5). **NOTE:** Make sure the boiling tank drain valve is closed before proceeding.
10. Turn the existing water supply ON and open the saddle tapping valve completely. **NOTE:** Check for leaks at connections. Should any occur, retighten connections.

OPERATION OF AQUA FOUNTAIN

1. Turn main switch, heating element switch, fan switch and pump switch to the OFF position.
2. The temperature control has been preset at the factory. **DO NOT** move the screw controlling the temperature control.
3. Plug the power cord into a 120 volt, single phase, 20 amp, electrical wall outlet.
4. Turn the main switch to the ON position.
5. Fill the boiling tank with water by pressing the momentary water switch until water is just above the heating element. Leave the boiling tank lid OFF.
6. Turn the heating element switch to the ON position. The boiling tank will stop filling when the water level is approximately 1-1/2" above the heating element.
7. To check the operation of the automatic filling system: Hold a container under the boiling tank drain valve, open the drain valve SLOWLY, and as the water level lowers to approximately 1" above the heating element - the unit should again allow water to refill the boiling tank.

CAUTION: If water level drops below the heating element at any time, and the boiling tank does not refill automatically, the unit should be shut OFF and your Distributor or Pure Water, Inc. should be notified.

8. Install the boiling tank lid. You may note by loosening the black knob on top and then tipping the lid, the bar at the bottom slip under the opening in the top of the unit. Center the lid over the opening and tighten the knob.
9. Turn the fan switch to the ON position. **DO NOT TURN THE PUMP SWITCH TO THE ON POSITION AT THIS TIME.**
10. All distillers shipped from Pure Water, Inc. have been tested to ensure proper functions when you receive them. Sometimes small amounts of water remain in the pump. To prevent freezing, the pump has been protected with a few ounces of nontoxic antifreeze. Flush the pump before you use the water from the distiller.
11. To flush the pump: Operate the distiller for at least four hours. **DO NOT WITHDRAW WATER DURING THIS TIME.**
12. Remove the plug from the auxiliary outlet at the rear of the unit.
13. Turn the pump switch ON and pump out approximately one gallon of water, and then turn the pump OFF. Install the plug back into the auxiliary outlet.

CAUTION: Water will come out quite forcefully. Hold a pail close to the auxiliary faucet.

NOTE: Steam sterilization: This unit has been run several times at the factory in order to test its operation, parts and assembly. However, the user is encouraged to run the unit through steam sterilization cycle prior to distilling water for usage. For steam sterilization cycle, it is advisable to do at this time.