

C-50TM & C-60TM

Commercial Steam-Distillation Systems



(C-60/75 Shown)



High-Quality steam-
distilled water for
commercial
and institutional
applications



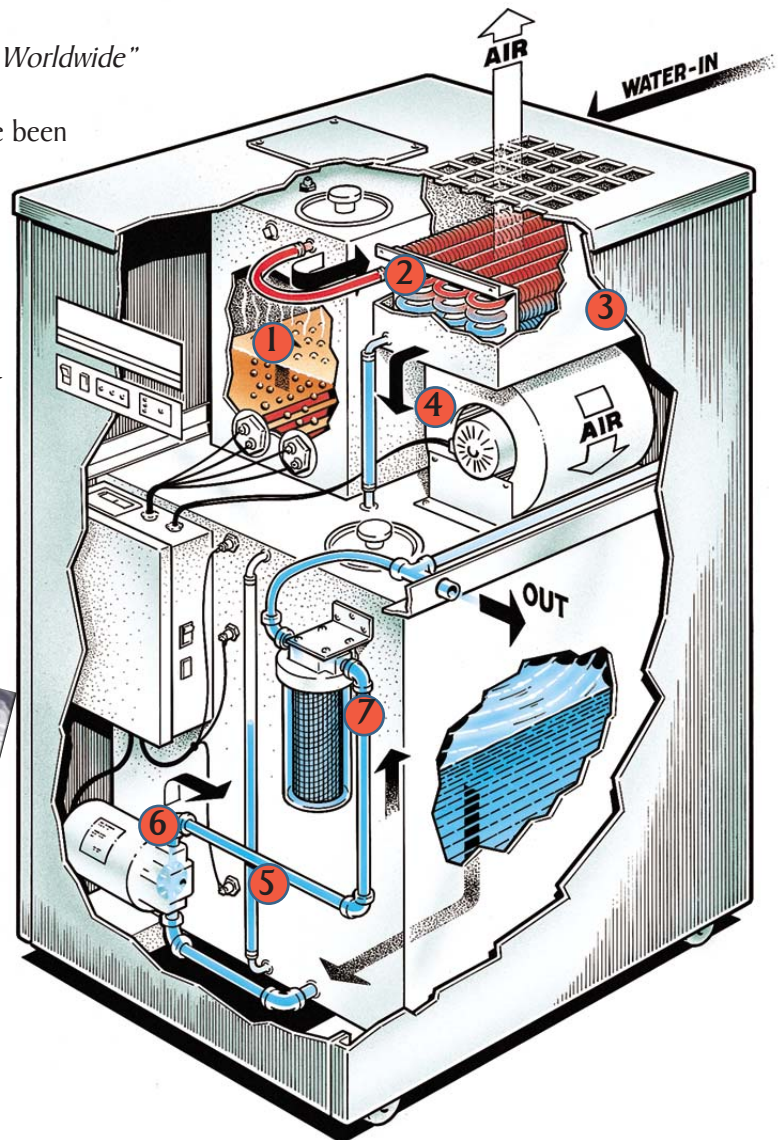
RELIABLE PURE WATER BRAND

"Improving the Quality of Life Through the Quality of Water — Worldwide"

For more than 45 years the Pure Water brand of distillers have been in daily use. Now used in homes, laboratories and offices throughout the U.S.A. and in more than 120 countries around the world.



Many U.S. and foreign Embassies and Embassy personnel around the world rely on their Pure Water Brand systems to provide consistent high purity steam-distilled water.



HIGHLY RECOMMENDED

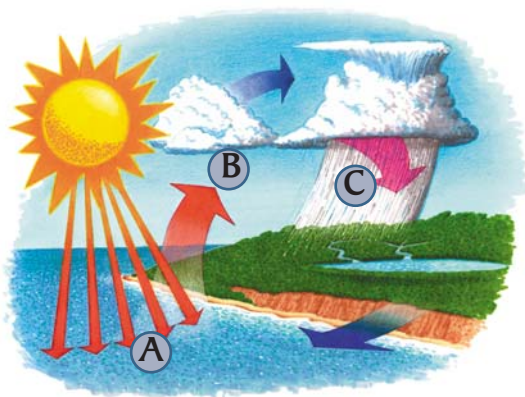
Steam-distillation is so effective, that in severe water emergencies, the Federal Emergency Management Agency (FEMA), the American Red Cross and the American Water Works Association (AWWA) all recommend using a distiller to purify the water for drinking. They do not recommend filters or reverse osmosis.



APPLICATIONS

Drinking water and so much more...

- Drink Water
- Laboratories
- Restaurants
- Schools
- Assisted Living Facilities
- Cosmetics Industry
- Hair Salons
- Hospitals
- Dental Clinics
- Coffee Services
- Factories
- Pharmaceutical
- Printing Companies
- Electronics / Battery Industry



NATURE'S PROCESS OF CONSTANT PURIFICATION

Thermal Phase Change Process

Every day Mother Nature is turning salty ocean water into fresh and pure rain water through a process of evaporation and precipitation. This is the basis for the steam-distillation process. It is as simple as A, B, C

- A** Raw water is boiled (killing any microbial contaminants)
- B** Steam rises, leaving behind virtually all contaminants
- C** The steam is condensed forming very pure steam-

HOW IT WORKS

Simplicity and reliability

- 1 Raw water enters the Boiling Chamber where it is heated.
- 2 The steam rises and enters the Condenser where it is cooled by forced air.
- 3 The steam converts to steam-distilled water (3) and
- 4 the water drops into the storage tank (4),
- 5 where it is monitored for purity (5).
- 6 The steam-distilled water is removed from the tank by a pump (6) and is
- 7 polished by carbon filtration on its way to the intended end-use.

C-50 AND C-60 MODELS

Fully self contained with generous storage. Complete stand-alone air-cooled distillation systems with self-contained storage. The steam-distilled water produced undergoes constant purity monitoring with automatic shut-down to ensure a great end-product. Both units are constructed of heavy-gauge T-304 stainless steel throughout and have a lockable cabinet for security.

The C-50 produces up to 50 gallons per day and has a built-in 50-gallon stainless steel storage tank. The C-60 produces up to 60 gallons per day with a 60 gallon stainless steel storage tank and additional features.

Installation is very easy and maintenance is low. The unit is covered by a one-year limited warranty.

ACCESSORIES & PARTS

A full range of accessories and parts for the Commercial Distillation Systems are available. A partial list includes softeners; activated carbon filters; pumps; dispenser with and without ultra violet; universal hook-up kit; tubing; fittings; and individual parts for the unit.

STAND-ALONE OR NETWORKED

Great versatility for various needs

Use as a stand-alone product for an individual end-use or install as a network to deliver pure steam-distilled water to a variety of locations.



FEATURES & BENEFITS

Unique in the Marketplace

- Produces up to 60 US gallons per 24 hour day
- Small Footprint
- Consistent High Purity Water
- Continuous Purity Monitoring
- Pump Shutdown on Purity Problem
- Easy to move (Built-in Castors)
- Fully Self Contained
- Security Lock on the Unit
- Constant Water Quality Monitoring
- Built in Pump for Distilled Water
- Auto Draining System
- Easily Networked
- Proven Reliability Worldwide
- Ease of Maintenance
- Stainless Construction
- Patented Design
- Hour Meter
- Leak Detection with Unit Shutdown (C-60)
- FeedWater Preheating (C-60, Optional on C-50)
- Drain Water Cooling System (C-60, Optional on C-50)

SPECIFICATIONS

Model C-50

Model C60/75

Power requirements	50 amp, 240 volt, 1 Ph AC 50/60	60 amp, 240 volt, 1 Ph AC 50/60
Heating elements (standard)	One 3,000 watt, one 3,500 watt	Two 4,000 watt
Feed Water Quality	Softened water recommended	Softened water recommended
Feed Water Supply	Minimum 1/2" (1.27 cm) feed	Minimum 1/2" (1.27 cm) feed
Feed Water Supply Pressure	30 PSI Minimum	30 PSI Minimum
Product Water Quality	Meets standard of the U.S. Pharmacopoeia	Meets standard of the U.S. Pharmacopoeia
Venting	Minimum air-flow of 350 CFM	Minimum air-flow of 450 CFM
Rated Distilled Water Production	50 U.S. gallons (189 litres) per day	60 U.S. gallons (227 litres) per day
Storage Capacity	50 U.S. gallons (189 litres)	75 U.S. gallons (284 litres)
Distilled Water Supply	3 gallons per minute through standard pump	3 gallons per minute through standard pump
Weight:		
<i>Unit Empty</i>	195 lbs. (88.5 kg)	230 lbs. (104.5 kg)
<i>Shipping Weight</i>	275 lbs. (125 kg)	310 lbs. (137 kg)
<i>Storage Tank Full</i>	655 lbs. (297 kg)	880 lbs. (400 kg)
Unit Dimensions:		
<i>Height</i>	47.5 inches (121 cm)	63 inches (161 cm)
<i>Width</i>	25 inches (64 cm)	25 inches (64 cm)
<i>Depth</i>	31.5 inches (80 cm)	31.5 inches (80 cm)
Construction Materials:	<u>standard</u> <u>optional</u>	<u>standard</u> <u>optional</u>
<i>Boiling Chamber</i>	304 stainless steel 316 stainless steel	304 stainless steel 316 stainless steel
<i>Condensing Coil</i>	304 stainless steel	304 stainless steel
<i>Storage Tank</i>	304 stainless steel 316 stainless steel	304 stainless steel 316 stainless steel
<i>Cabinet</i>	304 stainless steel	304 stainless steel
Features:		
<i>Automatic Drain</i>	Standard	Standard
<i>Water Quality Monitor</i>	Standard	Standard
<i>Built-In Pump</i>	Standard	Standard
<i>Hour Meter</i>	Standard	Standard
<i>Leak ShutDown</i>	NA	Standard
<i>Drain Water Cooling</i>	Optional	Standard
<i>Feedwater PreHeat</i>	Optional	Standard

AVAILABLE FROM:

PURE & SECURE LLC.
 4120 NW 44th, Lincoln, NE, 68524 USA
 Phone: 402/467-9300 Fax: 402/467-9393